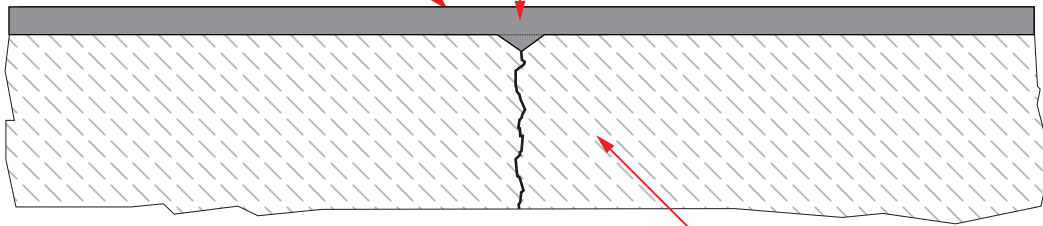


PATCH WITH FILLER MATERIAL

ALLUVIUS POLYMERIC  
FLOORING SYSTEM



EXISTING CONCRETE SUBSTRATE

*These drawings are for general guidance purposes only and will not be construed as specification without further evaluation with written and signed approval from architectural and engineering specialist. Alluvius Pty Ltd is not an authorised architectural or engineering specification body.*



WWW.ALLUVIUS.COM.AU

TYPICAL TREATMENT FOR  
NON-MOVING CRACKS

DATE	01/06/14	SCALE	Not to scale
DRAWING REVISION NUMBER	Original	PROJECT	